

## Long Branch Coal Company

Long Branch Coal Company, located at Long Branch, In Fayetteville District, on the Virginian Railway.



Operation of Long Branch No 1 and 2. These are drift opening in the No 2 Gas and Eagle coal beds with thickness of 6 feet.

C.R. Turner superintendent and H.L. Hendrickson mine foreman.

## J.C. Holley, Time Book, dated 1931 Long Branch Coal Company

<u>NAME</u>	<u>OCCUPATION</u>	<u>MAN NO.</u>
J.C. Holley		701
Walter Jordan		702
Pat Chambers	Machine Operator	703
E. Coles	Machine Helper	705
Jeff Lively	Timber	708
G.E. Warren	Motor	710
Richard Wright	Timber	712
Harry Sweeney	Track	713
Allie Graley	Ditching	714
W.C. Harris	Gob	715
Elliott Taylor		716
Lee Williams	Timber	717
Jack Akers	Brake	718
John Mullins	Brake	719

H.S. Kincaid	Track	720
Allen Stover	Machine Helper	721
Field Hall	Track	722
Burl Mullins	Motor	723
George Mullins	Brake	725
Ed Washington	Ditching	727
Emmitt Craddock	Driver	728
Shan Lively	Gob	729
Clyde Harris	rack	730
L.N. Lively	Cleaner	731
Elee Janney	Track Helper	732
Frank Akers	Pipe	733
Clarence Abbott	Motor	735
Grover Sheppard	Track Layer	736
W.R. Nickles	Pumper	738
Buster Williams	Cleaner	740
Willis Humphery	Cleaner	741
Earl Shrewder	Track Helper	742
Nelson Williams	Drum Runner	743
W.H. Asbery	Motor	744
Howard Humphery	Brake	745
Claude Sowders	Gob	746
Howard Williams	Driver	748
Sherman Foster	Gob	749
Joe Pryor	Driver	750
Sam Bryant	Timber	751
J.E. Fuller	Track Layer	752
Charlie Ward	Driver	754
W.M. Mullins	Coupler	755
V.B. Cook	Coupler	756
G.W. Gadly	Track Helper	757
Chas Humphery	Recovery Track	758

T.J. Craddock	Driver	759
Willie Taylor	Recovery Track	761
Mason Janney	Track Helper	762
Ira Stover	Ditching	763
Nath Boyd	Brake	764
Elmer Christian	Electrician	765
C.A. Brown	Electrician	766
Bernard McGraw	Timber	767
Ira Sowders	Substation	768
A.P. Rhome	Electrician	769
T.J. Underwood	Substation	770
G.W. Humphery	Substation	771
Ray Foster	Banding	772
W.M. Bowyer	Blacksmith	773
Lloyd Wilson	Picker	774
Clate Williams		467
Frank Maynor		452
James Toney		451
Claud Boyd		450
Linard Edward		473
Asbey Williams		
Henry McGraw		
E.H. Weaver		
J.W. Toney		416
Renix Treadway		454
Homer Williams		470
H.L. Hendrickson		477
Sam Stone		433
Charlie Bailey		456

## Rate Per Hour

Trackman	56 cents
Trackman helper	51 cents
Gob	51 cents
Setting Timber	56 cents
Cleaner	51 cents
Recovery Trackman	51 cents
Motorman	58 cents
Brackman	54 cents
Drum Runner	62 1/2 cents
Driver	54 cents
Banding	56 cents
Coupler	50 cents
Pipeman	54 cents
Ditching	56 cents
Picker	54 cents
Electrician	58-75 cents
Substation	55 cents
Blacksmith	62 1/2 cents
Pumper	58 cents
Machine	58 cent
Machine Helper	54 cents

Two-Payment Time Book

Month of *June 30 1931*

NAMES	Occupation	16/17/18/19/20/21/22/23/24/25					26/27/28/29/30/31					Total Time	Rate per Day	Amount	Remarks	
<i>J. C. Hally</i>																
<i>N. D. Gordon</i>																
<i>Pat Chamber</i>	<i>machine</i>															
<i>E. Cole</i>	<i>machine</i>															
<i>Jeff Linnell</i>	<i>timber</i>															
<i>A. E. Warren</i>	<i>motor</i>															
<i>Richard Rigs</i>	<i>timber</i>															
<i>Harry Swaine</i>	<i>truss</i>															
<i>Allie Trale</i>	<i>Ditching</i>															
<i>W. E. Harvix</i>	<i>Job</i>															
<i>Ellis Taylor</i>																
<i>L. E. Williams</i>	<i>timber</i>															
<i>Jack Green</i>	<i>truss</i>															
<i>Johnnie</i>	<i>"</i>															
<i>H. S. Kincaid</i>	<i>truss</i>															
<i>Allen Stamer</i>	<i>machine</i>															
<i>Fields Hall</i>	<i>truss</i>															
<i>Dusk Mullis</i>	<i>motor</i>															

Two-Payment Time Book

Month of *June 30* 1931

NAMES	C	Occupation	16 17 18 19 20 21 22 23 24 25							26 27 28 29 30 31					Total Time	Rate per Day	Amount	Remarks	
<i>Geo Mullins</i>		<i>trace</i>	8																
<i>Ed. Washmigo</i>		<i>Ditching</i>	8																
<i>Emmitt Truller</i>		<i>Driner</i>	8																
<i>John Family</i>		<i>Hal</i>	8																
<i>Clyde Hadris</i>		<i>trace</i>	8																
<i>John Family</i>		<i>Cleaner</i>	8																
<i>Ed. Jansley</i>		<i>trace H.</i>	8																
<i>Frank Smith</i>		<i>Pipe</i>	8																
<i>Clarence Abbott</i>		<i>motor</i>	8																
<i>Frank Schepers</i>		<i>trace</i>	8																
<i>W.R. Nickles</i>		<i>Pumper</i>	8																
<i>Price Brock</i>		<i>motor</i>	8																
<i>Buster Willis</i>		<i>Cleaner</i>	8																
<i>Willie Humphreys</i>		<i>"</i>	8																
<i>Earl Shewald</i>		<i>trace H.</i>	8																
<i>Nelson Willis</i>		<i>Drum</i>	9																
<i>W.H. Aubrey</i>		<i>motor</i>	8																
<i>Howard Hubert</i>		<i>trace</i>	8																
<i>Claude Sauter</i>		<i>Hal</i>	8																
<i>Howard Willis</i>		<i>Drum</i>	8																





.....  
for BOY or  
GIRL to  
**RED GOOSE  
SHOES**

Let them know real foot comfort.



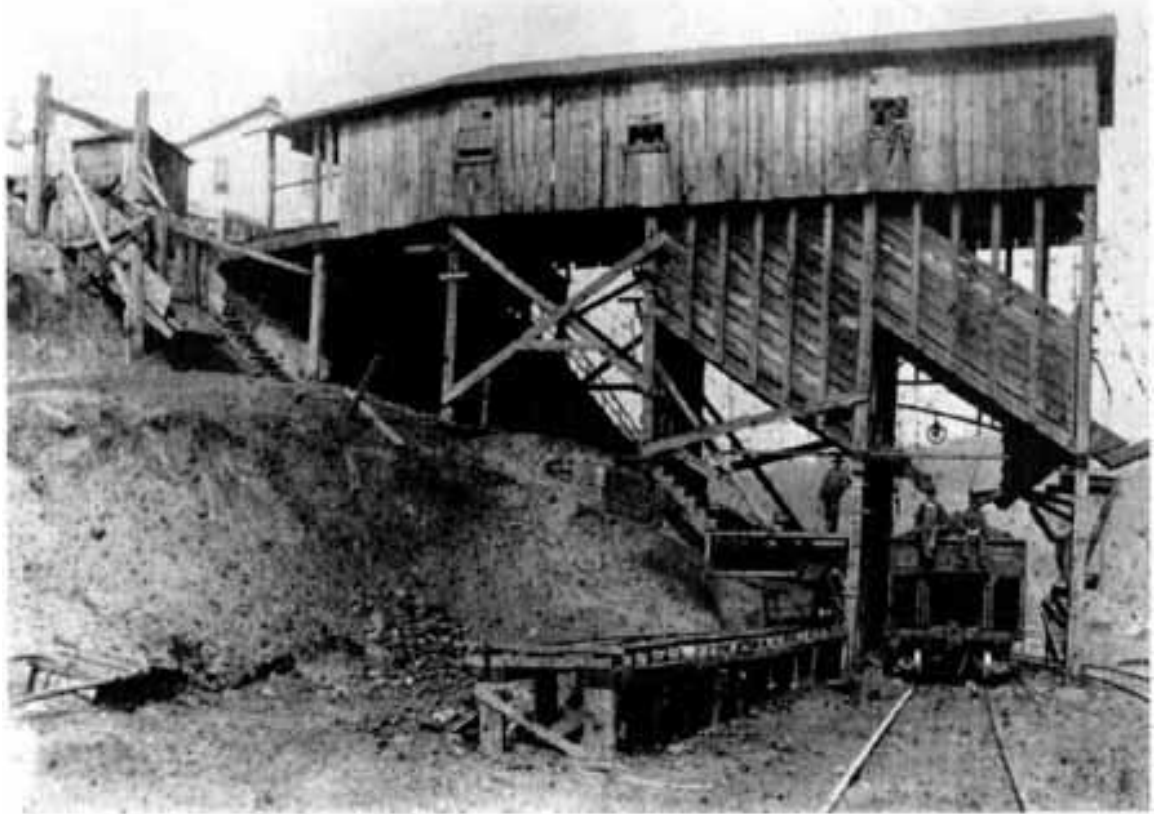
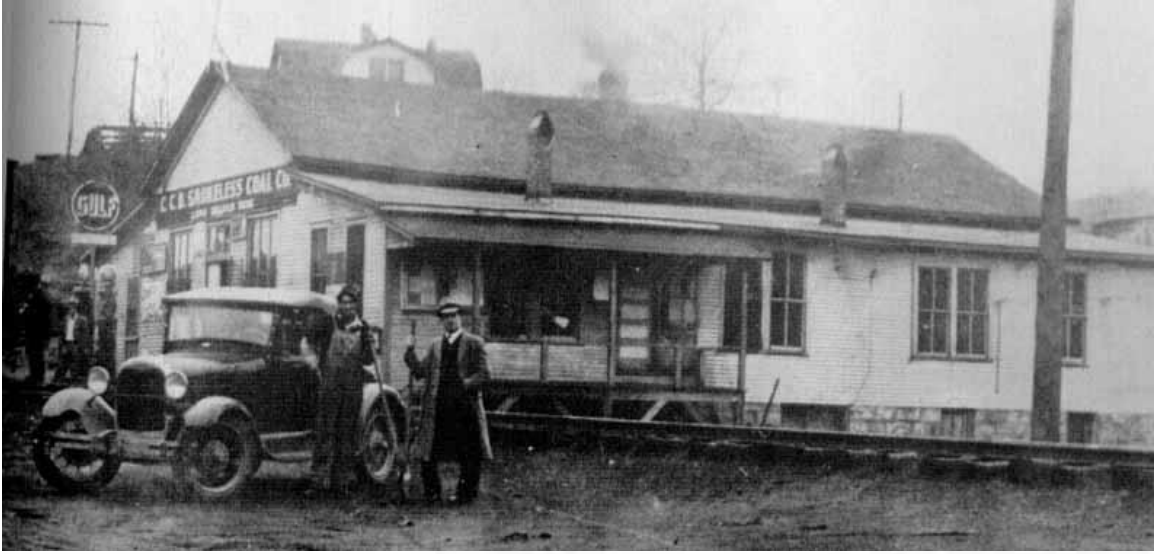
Dainty Sandals or sturdy Oxfords,  
you'll find our assortment complete. We feel sure you'll say  
the price is right at

**\$1.95  
TO  
\$2.95**



**KOPPERS STORES**  
**Long Branch, W. Va.**  
*"Make Your Coppers Count at Koppers"*

1934 Pax Pennant Ad.



*First Long Branch Company Tipple 1912-1923*

